

Crosswire®

WOVEN VINYL FLOORING

The warmth of carpet,
the performance of vinyl.

FLEXCO®





Crosswire

WOVEN VINYL FLOORING

Specify a look that lasts.

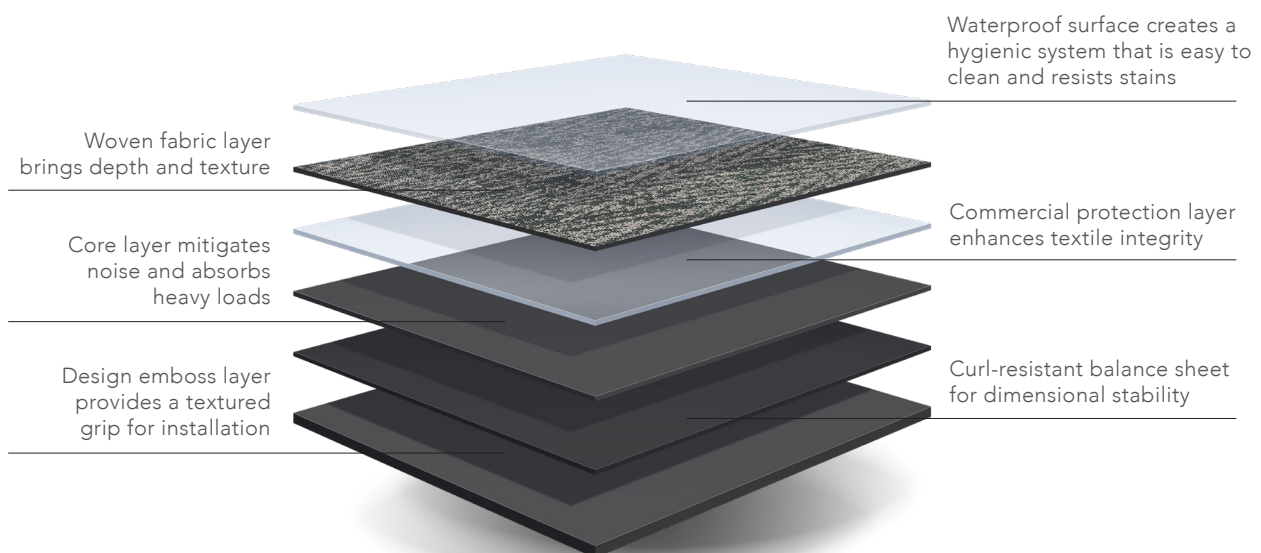
Crosswire Woven Vinyl Flooring achieves the quiet comfort and appeal of carpet with the durability, stain resistance and long-lasting performance of vinyl.

This attractive, textured, low-profile surface is engineered to stand up to the highest design standards and daily wear. A protective layer covers woven polyester threads, creating a textured look that is slip, stain and allergen resistant. Multiple base layers add cushion and resilience, while selvaged edges eliminate fraying.

In addition to resisting wear patterns from daily foot traffic, woven vinyl is easy to clean and disinfect. Across a wide range of commercial environments, Crosswire provides a lasting solution.

Exceptional design and performance.

- ~ Attractive, textured, low-profile design
- ~ Multilayer construction provides dimensional stability and comfort
- ~ Stain, wear, scratch and slip resistant
- ~ Triple-Defense Waterproof Protection for the warranted life of the product
- ~ Dust, mold and allergen resistant
- ~ Easy to clean and disinfect
- ~ Backed by a 20-Year Limited Commercial Warranty
- ~ 10 on-trend colors that coordinate with Flexco flooring, wall base and stair treads





Ideal for heavy-use applications.

- ~ Education: classrooms, libraries, hallways, common areas
- ~ Healthcare and Assisted Living Facilities: hallways, patient rooms, eating areas, waiting rooms, doctors' offices
- ~ Corporate: offices, break rooms, lobbies
- ~ Retail: restaurants, stores, service facilities
- ~ Hospitality: hotel corridors, guest rooms, convention areas, cardio/workout areas
- ~ Multilevel Housing: apartment complexes, student housing, short-term residences

PRODUCT DETAILS

Gauge	1/8" (3mm)
Size	9.84" × 39.37" (250mm x 1000mm)
Pieces/Carton	16
Weight/Carton	44 Lbs.
Sq. Ft./Carton	43.06

RECOMMENDED ADHESIVES + UNDERLAYMENT

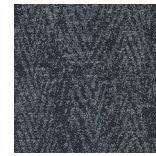


See product technical data sheets on flexcofloors.com for a complete list of approved adhesives and underlayment options.

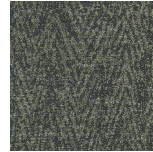
CROSSWIRE WOVEN VINYL FLOORING COLORS



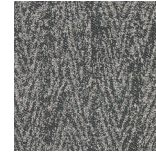
Winter Solstice
250



Baltic Wave
251



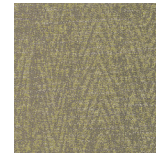
Garden Path
252



Moonquake
253



Greige
254



Firefly
255



Windrift
256



Savannah Sunset
257



Thundercloud
258



Midnight Ripple
259



For more information, visit flexcofloors.com or contact your Flexco distributor. For samples, call 1-800-633-3151 or visit flexcofloors.com/samples.

