

# FlexTerior™

## METAL TREADS

Made to last, outdoors and indoors.

**FLEXCO**®  
AMERICAN-MADE FLOORING







# FlexTerior™

## METAL TREADS

### Durable epoxy grit surface strip for long-lasting performance.

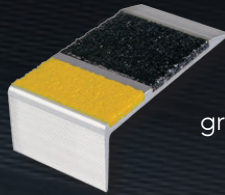
Outdoors in rugged conditions, indoors in industrial or commercial applications, FlexTerior treads offer a gripping surface strip that's made to last. Made of exterior-grade aluminum and inlaid with an epoxy and abrasive grit blend, FlexTerior treads are ideal for installation on new or existing stairs and landings and meet ADA recommendations for slip resistance.

### A full metal tread system.

Flexco offers FlexTerior metal nosings, treads and flat steps to provide you a complete metal tread system. Each product is constructed of heat-treated exterior grade aluminum which is resistant to most elements of corrosion. An inlaid anti-slip epoxy color coating is colorfast and resistant to marring, scratching and chipping. Nosings are available in 4-inch depths. Treads are available in 9-inch and 11-inch tread dimensions.

- ~ Corrosion-resistant 6063T3 aluminum construction
- ~ Inlaid with durable epoxy and abrasive grit
- ~ Multiple epoxy strip color options
- ~ Double grit strip available in black and one accent color
- ~ Pre-drilled, countersunk holes

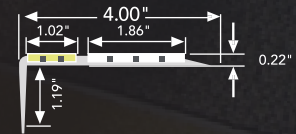




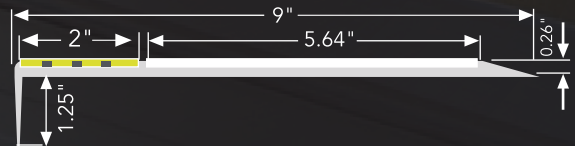
4" nosing is available with a double grit strip for traction and visibility when ascending and descending stairs.



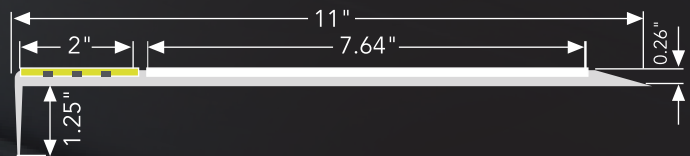
### 4" NOSING DIMENSIONS



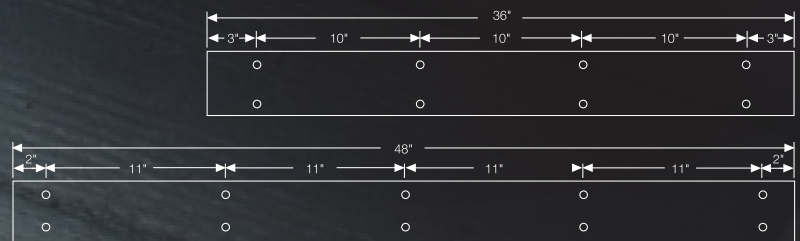
### 9" TREAD DIMENSIONS



### 11" TREAD DIMENSIONS



### COUNTERSUNK HOLE SPACING



Recommended fasteners available by substrate.

# Choose the metal tread that meets your exact specification.

FlexTerior treads are available in seven standard colors and unlimited custom color options.

With our exceptional dual-channel face design, this allows you to create numerous color combinations.

## PRODUCT DETAILS

Gauge	1/4" Overall
Depth	4", 9", Plus 11"
Lengths	36", 48", Over 48" Special Order
Nose	Square
Pieces / Carton	6, Special Order TBD
Weight / Lin. Ft. (lb.)	2.2 for 9" or 2.76 for 11"
Screw Packaging	36" (9 / Set) 48" (13 / Set)
Order Prefix	FLEX (FlexTerior Metal Tread)

Custom lengths are available in 1" increments.

Custom-colored epoxy inlay is available for an additional charge.

Note: Must indicate concrete or wood installation for proper mechanical fasteners. A premium-grade, exterior polyurethane adhesive approved by the adhesive manufacturer for bonding aluminum directly to concrete, exterior-grade plywood or metal is required.

Leave room for contraction and expansion of treads when taking measurements for depth and length.

## ANTI-SLIP EPOXY COLORS

Double grit strip includes black and one accent color.

Seven accent colors available.



Ash



Cactus



Coal\*



Sunshine\*



Tomato



Walnut



Sapphire

\*Coal / Coal and Coal / Sunshine color combinations, in stock. All other combinations are special order. Color selections must be made from actual samples.



For more information, visit [flexcofloors.com](https://flexcofloors.com) or contact your Flexco distributor.

For samples, call 1-800-633-3151 or visit [flexcofloors.com/samples](https://flexcofloors.com/samples).

