

A black office chair with casters is positioned on a blue vinyl tile floor. The floor has a subtle, circular wood-grain pattern. The lighting is soft, highlighting the texture of the floor and the sleek lines of the chair.

FLEXCO[®]
AMERICAN-MADE FLOORING

Natural Elements

PREMIUM LUXURY
VINYL TILE

When details matter.



Natural Elements

PREMIUM LUXURY VINYL TILE

It's your reputation that's
being installed.

FLEXCO LVT is made with the same attention
to detail you bring to your work.

It begins with a smarter approach to manufacturing.
Every layer has a purpose – enhance wear, add comfort
or bring beauty to the floor. To ensure environmental
responsibility and product performance down the road,
we use only known sources of high-quality virgin
raw materials.

High-definition printing creates an attractive, natural-
looking tile with a durable top layer and a resilient
underlayment. And because all of our LVT product
is made in the U.S.A., you can create the look you
want with 48 in-demand colors and patterns.



This attention to small
details makes a big difference,
giving designers a powerful
new resource.

- Phthalate-Free
- Virgin Raw Materials
- 100% Recyclable
- 28-mil Commercial Wear Layer
- 20-Year Warranty
- Made in the U.S.A.
- Qualifies for LEED Credit

Ideal for:

- **Education:** Classrooms, libraries, hallways, common areas
- **Healthcare and Assisted Living Facilities:** Hallways, patient rooms, eating areas, waiting rooms, doctors' offices
- **Corporate:** Offices, break rooms, lobbies
- **Retail:** Restaurants, retail stores, retail service facilities
- **Hospitality:** Hotel/motel corridors, guest rooms, convention areas, cardio/workout areas
- **Multi-Level Housing:** Apartment complexes, student housing, short-term residences

Two sizes available.



Every detail matters.

All layers phthalate-free

28-mil commercial wear layer delivers long-lasting resilience

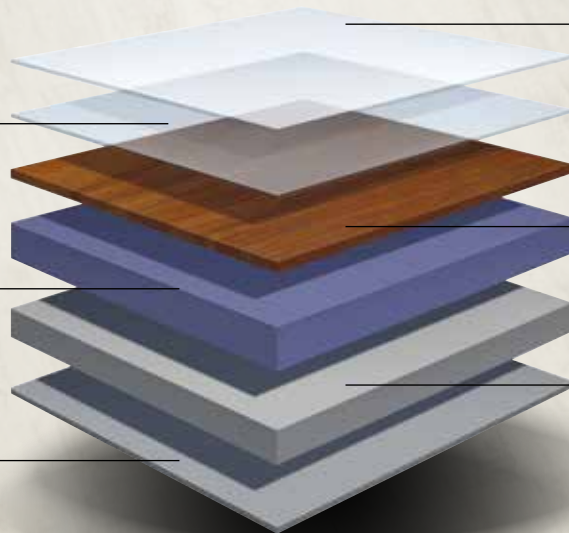
Supplemental stabilization layer provides noise reduction

Heat-resistant balance sheet prevents cupping and curling

Durable ceramic bead top layer for ease of cleaning and disinfection

High-definition printed design layer creates natural-looking beauty

Recyclable core layer adds dimensional stability



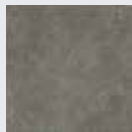
Details make a difference.

If you care about getting the details right, choose FLEXCO LVT. You'll quickly find the right product, in complementary designs with performance qualities that excel in high-use commercial environments.

Natural Elements Premium Luxury Vinyl Tile Colors

Available in 12" x 24" tiles, unless otherwise noted.

**Only available in 18" x 18".*



604
Gray Ash*



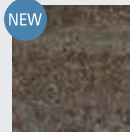
632
Dusk*



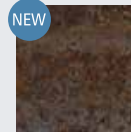
649
Terrace



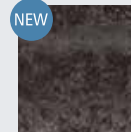
650
Pewter



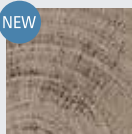
679
Oxidized
Bronze



680
Oxidized
Iron



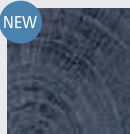
681
Oxidized
Steel



682
Reflective
Rings



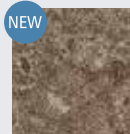
683
Hushed Hoops



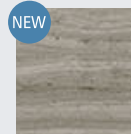
684
Cadet
Blue



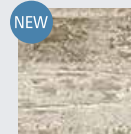
685
Portofino



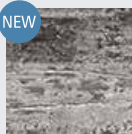
686
Capri



687
Timeless
Taupe



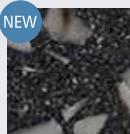
688
Lighthouse



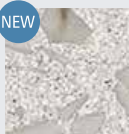
689
Urban Gray



690
Deconstructed



691
Art Deco*



692
South Beach*

For an exact color match,
please order full-sized samples at:
FLEXCOFloors.com/samples.

ORDER PREFIX **NES**

GAUGE	1/8" (3mm)	1/8" (3mm)
SIZE	18" x 18"	12" x 24"
PIECES / CTN	16	18
WEIGHT / CTN (LB)	36	36
SQ FT / CTN	36	36
WARRANTY	20-Year Limited Commercial Warranty	20-Year Limited Commercial Warranty



RECOMMENDED ADHESIVES

- SP-500 Acrylic Aerosol Pressure-Sensitive Adhesive
- AW-510 Acrylic Wet-Set Adhesive
- AP-520 Acrylic Roll/Trowelable Pressure-Sensitive Adhesive
- MS-700 Modified Silane Wet-Set Adhesive
- U-705 Urethane Wet-Set Adhesive
- EW-710 Epoxy Wet-Set Adhesive

RECOMMENDED UNDERLAYMENT

- CSU-400 Cork Sound Control Underlayment
- FSU-410 Floating Sound Control Underlayment

FLEXCO[®]
AMERICAN-MADE FLOORING



Made in the U.S.A.

Visit FLEXCOFloors.com
or contact your FLEXCO distributor.
Call 1-800-633-3151 for samples
or visit FLEXCOFloors.com/samples.