



FLEXCO®  
**Crosswire**®  
Woven Vinyl Flooring

Crosswire®

WOVEN VINYL FLOORING  
FROM FLEXCO®

For a look that lasts.







# Crosswire<sup>®</sup>

## WOVEN VINYL FLOORING FROM FLEXCO<sup>®</sup>

For a look that lasts.

It's one thing for flooring to look nice on day one, it's another to still look good after years of use. Daily foot traffic, cleaning and disinfecting, and regular wear and tear inflict serious abuse. In heavy-use commercial environments, you need a solution that lasts.

Crosswire<sup>®</sup> Woven Vinyl Flooring from FLEXCO<sup>®</sup> takes the look of carpet and adds superior durability, stain resistance and ease of cleaning and disinfection.

Woven polyester threads embedded under a protective topcoat layer create a design that is impenetrable by allergens. Selvedge edges eliminate fraying, while multiple base layers add comfort and resilience. The subtle texture of the threads provides a slip-resistant surface that resists wear patterns yet is easy to clean.





## Ideal for:

- **Education:** Classrooms, libraries, hallways, common areas
- **Healthcare and Assisted Living Facilities:** Hallways, patient rooms, eating areas, waiting rooms, doctors' offices
- **Corporate:** Offices, break rooms, lobbies
- **Retail:** Restaurants, retail stores, retail service facilities
- **Hospitality:** Hotel/motel corridors, guest rooms, convention areas, cardio/workout areas
- **Multi-Level Housing:** Apartment complexes, student housing, short-term residences



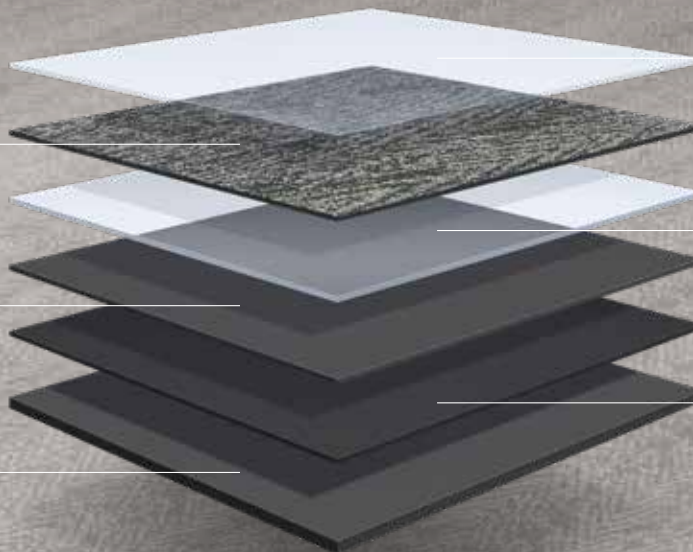
- Stain and wear-resistant
- Easy to clean and disinfect
- 10 on-trend colors coordinated with other FLEXCO flooring
- The look of carpet with the durability of vinyl
- Backed with a 20-year limited commercial warranty
- Triple-Defense waterproof protection for the warranted life of the product

## Built to last.

Woven fabric layer brings depth and texture

Core layer mitigates noise and absorbs heavy loads

Design emboss layer provides a textured grip for installation



Waterproof surface creates a hygienic system that is easy to clean and resists stains

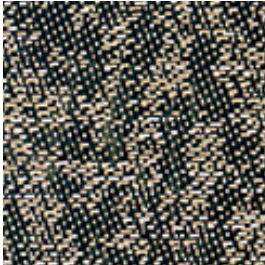
Commercial protection layer enhances textile integrity

Curl-resistant balance sheet for dimensional stability

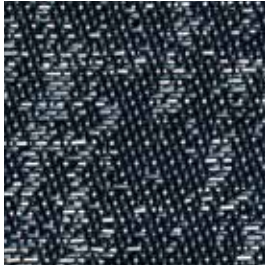
## Specify a look that lasts.

Choose the look of carpet with the durability, stain-resistance and ease of cleaning and disinfection your customers require in their commercial settings.

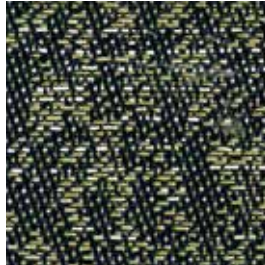
### Crosswire® Woven Vinyl Flooring Colors



250 Winter Solstice



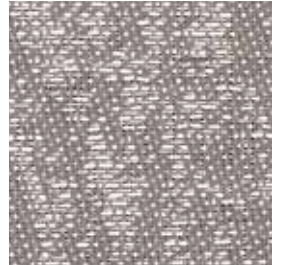
251 Baltic Wave



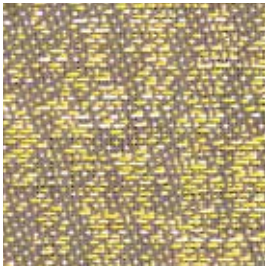
252 Garden Path



253 Moonquake



254 Greige



255 Firefly



256 Windrift



257 Savannah Sunset



258 Thundercloud



259 Midnight Ripple

#### ORDER PREFIX **WVF**

GAUGE	1/8" (3mm)
SIZE	9.84" x 39.37" (250mm x 1000mm)
PIECES / CTN	16
WEIGHT / CTN (LB)	44
SQ FT / CTN	43.06
WARRANTY	20-Year Limited Commercial Warranty



#### RECOMMENDED ADHESIVES

- SP-500 Acrylic Aerosol Pressure-Sensitive Adhesive
- AW-510 Acrylic Wet-Set Adhesive
- AP-520 Acrylic Roll/Trowelable Pressure-Sensitive Adhesive
- U-705 Urethane Wet-Set Adhesive

#### RECOMMENDED UNDERLAYMENT

- CSU-400 Cork Sound Control Underlayment
- FSU-410 Floating Sound Control Underlayment

**FLEXCO**  
**Crosswire**<sup>®</sup>  
Woven Vinyl Flooring

Visit [FLEXCOFloors.com](http://FLEXCOFloors.com)  
or contact your FLEXCO distributor.  
Call 1-800-633-3151 for samples  
or visit [FLEXCOFloors.com/samples](http://FLEXCOFloors.com/samples).

