

AcoustiCORK RC Series 5mm & 10mm Rolls

Glued Down Hardwood Floors on a Concrete Slab

The following installation instructions are offered as a recommendation, but are not intended as a definitive project specification. They are presented in an attempt to be used with recommended installation procedures as published by the National Oak Flooring Manufacturers Association (NOFMA) and the National Wood Flooring Association (NWFA).

SUBFLOOR

1. All subfloor work should be in accordance with the recommended procedures as published by NOFMA and the NWFA.
2. Concrete subfloor should be level, properly sloped and structurally sound.
3. Inspect concrete subfloor for any open cracks and fill with a high-grade epoxy filler.
4. Remove any excess concrete lumps or residue that may interfere with the installation of the AcoustiCORK RC Series 5mm or 10mm underlayment.

TESTING FOR MOISTURE

1. Test the subfloor for excessive moisture prior to the installation of the AcoustiCORK PR60.
2. If excessive moisture is present (normally >3 lbs. per 1000 s/f in 24hrs with a Calcium Chloride test) in the subfloor, corrective action must be taken. Consult the project architect, flooring manufacturer and/or the most recent NOFMA & NWFA Installation Manuals for methods and materials for dealing with excessive subfloor moisture.

PERIMETER ISOLATION STRIP

1. Install the precut 3/4" wide, 6mm thick perimeter isolation barrier vertically around the perimeter of the entire floor including any openings or protrusions such as electrical boxes, heating ducts, cold air returns, columns or pipes in the subfloor installation. The perimeter isolation strip **MUST be installed prior** to AcoustiCORK RC Series underlayment being installed.
2. Remove the release liner from the self-adhesive backing and place flat against the wall, flush to the floor.
3. After positioning, press the isolation barrier firmly into place at all wall and vertical partitions surrounding the perimeter using the AcoustiCORK underlayment.
4. Never mechanically fasten the isolation barrier, as this will severely diminish the acoustical performance of the entire sound rated floor or system.

5. After the finished floor is installed the perimeter isolation barrier should be trimmed flush with the surface of the finished floor.

ACOUSTICORK RC Series UNDERLAYMENT for GLUED DOWN HARDWOOD FLOORS

1. Cut the 5mm or 10mm AcoustiCORK RC Series material to the desired length and position the material in the space to be covered.
2. Butt the AcoustiCORK RC Series 5mm or 10mm underlayment against the perimeter isolation barrier already installed at the floor/wall junction.
3. Pull the loose laid material back at least half the length of the cut material. Using a properly sized U or V-notched trowel (minimum 3/32") apply a **100% Polyurethane Based Wood Flooring Adhesive**, to the concrete subfloor. Repeat the process for the other half of the sheet, rolling in both directions with a 75 or 100# floor roller.
4. Proceed to cover the entire room, making sure the sheets are tightly butted together, without gaps. Rolling the floor area in both directions using a 75 or 100# floor roller. **Never mechanically fasten the sheets to the subfloor, as this will severely diminish the acoustical value of the product.**
5. After completion, the AcoustiCORK RC Series underlayment should cover the entire floor area without gaps and be securely bonded with the joints tightly butted.

GLUED DOWN WOOD FLOORING

1. Follow the manufacturer's recommended instructions for installing the finished floor, using the trowel size specified for an installing the finished flooring product using a **100% Polyurethane Based Wood Flooring Adhesive**.

Note Regarding Adhesives: The use of water based adhesives for installing either the RC Series underlayment to the subfloor or the finished flooring to the underlayment is typically not recommended. Please contact us for a list of recommended adhesives.

2. If a baseboard or shoe molding detail is required, leave a minimum 1/8" gap between the finished floor and the bottom of the shoe or baseboard. This gap must be filled with a non-hardening, color matching, paintable or clear Acoustical Grade Sealant.

AcoustiCORK™ PRODUCTS

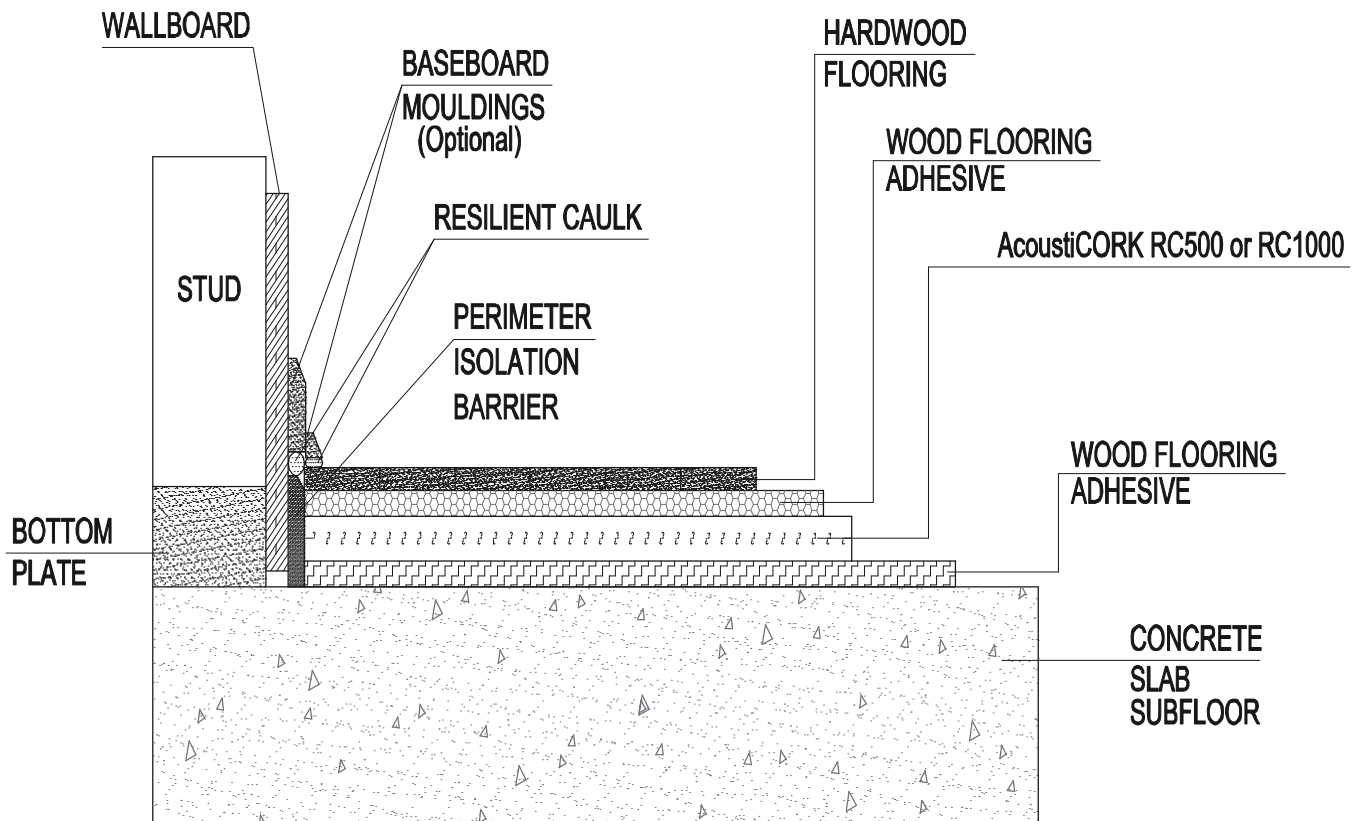
Sound Control Underlayment & Crack Suppression Membrane

26112 110th Street • PO Box 25 • Trevor, WI 53179 • 1-800-558-3206 • 1-262-862-2311 • FAX 1-262-862-2500

Visit our Website at www.acousticorkusa.com for the most complete information on **AcoustiCORK™**

AcoustiCORK RC Series 5mm & 10mm Rolls

Glued Down Hardwood Floors on a Concrete Slab



AcoustiCORK™ PRODUCTS

Sound Control Underlayment & Crack Suppression Membrane

26112 110th Street • PO Box 25 • Trevor, WI 53179 • 1-800-558-3206 • 1-262-862-2311 • FAX 1-262-862-2500

Visit our Website at www.acousticorkusa.com for the most complete information on AcoustiCORK™