

AcustiCORK™ CRC950

9.5mm Composite Sheet Sound Control Underlayment

INSTALLATION INSTRUCTIONS Ceramic Tile - Direct Bonded on a Concrete Slab Subfloor

The following installation instructions are a recommendation, but are not intended as a definitive project specification. They are presented in an attempt to be used with recommended installation procedures, as published by the Tile Council of America and as specified in the American National Standards Institute.

SUBFLOOR

1. All subfloor work should be in accordance with the recommended procedures as published by the Tile Council of America and the American National Standards Institute (ANSI).
2. Concrete subfloor should be level, properly sloped and structurally sound
3. Inspect concrete subfloor for any open cracks and fill with a high-grade epoxy filler.
4. Remove any excess concrete lumps or residue that may interfere with the installation of the AcustiCORK CRC950 underlayment.

PERIMETER ISOLATION STRIP

1. Install the precut 3/4" wide, 6mm thick perimeter isolation barrier vertically around the perimeter of the entire floor including any openings or protrusions such as electrical boxes, heating ducts, cold air returns, columns or pipes in the subfloor installation. The perimeter isolation strip **MUST be installed prior to** AcustiCORK CRC950 underlayment being installed.
2. Remove the release liner from the self-adhesive backing and place flat against the wall, flush to the floor.
3. After positioning, press the isolation barrier firmly into place at all wall and vertical partitions surrounding the perimeter using the AcustiCORK underlayment material.
4. Never mechanically fasten the isolation barrier, as this will severely diminish the acoustical performance of the entire sound rated floor system.
5. After the finished floor is installed the perimeter isolation barrier should be trimmed flush with the surface of the finished floor.

ACOUSTICORK CRC950 UNDERLAYMENT for DIRECT BONDED CERAMIC TILE FLOORS

1. Starting in one corner of the room, snap a chalk line 24" from the edge of the perimeter isolation barrier installed at the floor/wall junction.
2. Using a properly sized U or V-notched trowel (minimum 3/32") apply a 100% Polyurethane wood flooring adhesive in the area between the chalk line and

the wall down the entire length of the area to be covered on the subfloor.

3. Lay the AcustiCORK CRC950 sheets, **with the Rubber/Cork (Black& Tan) side facing down toward the subfloor**, into the bed of adhesive applied, butting the sheets tightly against the perimeter isolation barrier already installed. Trim the last sheet to length to fit the space available.
4. Snap another chalk line 24" from the edge of the previously laid sheets and repeat the process of applying the adhesive and installing the sheets, starting with a 1/2 sheet on alternating rows to stagger the seams. Repeat the process for the balance of the room.
5. Proceed to cover the entire room, making sure the sheets are tightly butted together, without gaps. Roll the floor area in both directions using a 100# roller, to ensure the sheets are firmly embedded in the adhesive. **Never mechanically fasten the sheets to the subfloor, as this will severely diminish the acoustical value of the product.**
6. After completion, the AcustiCORK CRC950 underlayment should cover the entire floor area without gaps and be securely bonded with the joints tightly butted.

CERAMIC TILE INSTALLATION

1. Follow the tile and setting material manufacturers recommended instructions for the installation of the finished floor tile conforming to ANSI A108 1 A, B, C and A108 5, depending on the method of installation. Direct bonded applications of tile should be installed with a Latex Modified Thin-Set Mortar compliant to ANSI 118.4.
2. After the tile floor is installed and grouted, visually inspect and remove, where necessary and excess mortar or grout that is in contact with any walls or protrusions in the floor. Failure to do so may greatly diminish the acoustical performance of the system.
3. Trim the Perimeter Isolation Barrier, previously installed, flush with the surface of the finished floor.
4. Prior to the installation of any base or trim, a bead of non hardening acoustical grade sealant should be installed on the top edge of the trimmed Isolation Barrier
5. If a tile wall or cove base is to be installed, **the space between the floor tile and the tile base should not be grouted.** A non-hardening flexible color matching sealant should be used to fill this joint.
6. If baseboard or shoe molding detail is required, leave a minimum 1/8" gap between the finished floor and the bottom of the shoe or baseboard. This gap can be filled with a non-hardening, color matching, paintable or clear Acoustical Grade Sealant.

AcustiCORK™ PRODUCTS

Sound Control Underlayment & Crack Suppression Membrane

26112 110th Street • PO Box 25 • Trevor, WI 53179 • 1-800-255-2675 • 1-262-862-2311 • FAX 1-262-862-2500

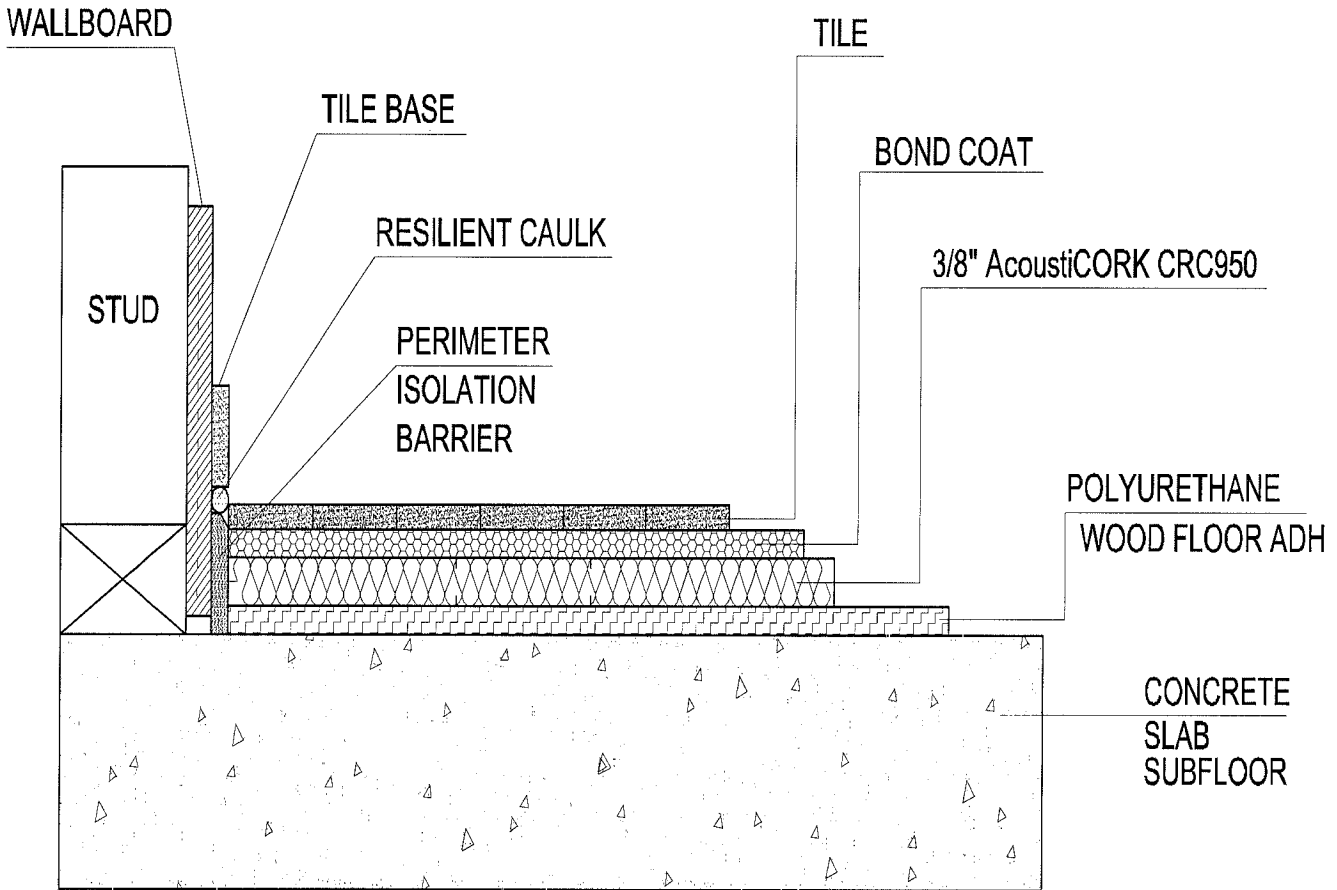
Visit our Website at www.acousticorkusa.com for the most complete information on AcustiCORK™

AcoustiCORK™ CRC950

9.5mm Composite Sheet Sound Control Underlayment

INSTALLATION INSTRUCTIONS

Ceramic Tile - Direct Bonded on a
Concrete Slab Subfloor



AcoustiCORK™ PRODUCTS

Sound Control Underlayment & Crack Suppression Membrane

26112 110th Street • PO Box 25 • Trevor, WI 53179 • 1-800-255-2675 • 1-262-862-2311 • FAX 1-262-862-2500

Visit our Website at www.acousticorkusa.com for the most complete information on AcoustiCORK™