

Spray-Grip™

2100

RUBBER SPRAY ADHESIVE

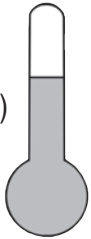
Installation Guide



+ 32°F

1.

68° F
(20° C)



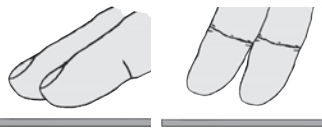
- Store adhesive at a minimum temperature of 68° F (20° C) for 24 hours prior to installation.
- Condition flooring per manufacturer's recommendations.

2.



- Ensure substrate, flooring and surrounding areas are clean and dust-free.
- Damp-mop substrate if dust is present.
- Only use Portland based patching and leveling compounds.

3.



- Wipe hand across surface.
- If dust transfers, substrate is not clean.

4.



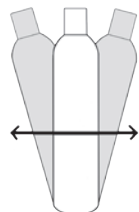
- HVAC must be continuously operated for a minimum of 72 hours at a temperature of no less than 68° F (20° C) prior to installation.

5.



- Protect from overspray with a spray shield, drop cloths, paper or masking.

6.

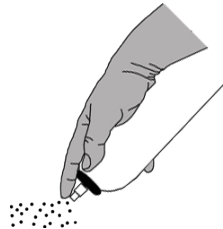


- Shake aerosol can well for 30 seconds.



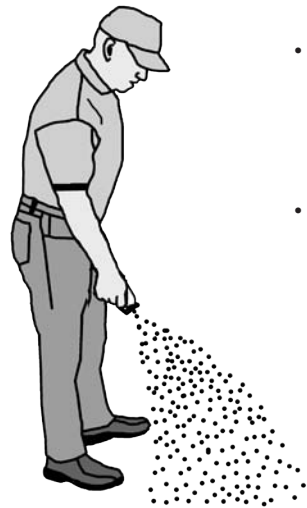
- Remove white cap.

7.



- Press tip with finger to spray.

8.



- Stand straight up, bend over only when necessary.
- Adhesive should spray out in a wide mist and fall similar to snow towards desired surface.
- Hold can upside down slightly away from the body as illustrated, approximately 20-30 inches (50-76 cm) horizontally from the substrate. Aim at floor and press tip with finger.

Avoid extremely heavy application. For proper coverage refer to spray pattern photo on back.

9.

- Smoothly walk back and forth to uniformly apply adhesive and achieve results in the photo on the reverse side.

NOTE

- Spraying in a sweeping motion may result in an inconsistent spray pattern.
- Excess buildup or inconsistent spray pattern on substrate may cause telegraphing.



10.



- To ensure optimal spray pattern, remove any adhesive buildup from tip that may occur during the application process.

13.



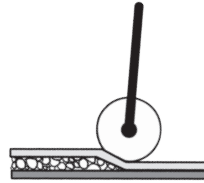
- Open time after application is 2 hours. While open, ensure that adhesive is not contaminated by dust.

11.



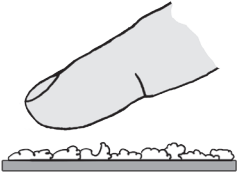
- Wipe overspray off with a damp cloth. If overspray dries, remove with mineral spirits.

14.



- Roll flooring with a 100 lb. (45 kg) roller within 1 hour after installation to complete the bonding process.
- After rolling, floor is ready for all access.

12.

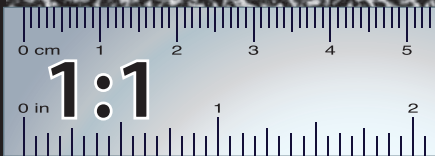


- Allow adhesive to dry until there is no adhesive transfer when lightly touched.
- High humidity and/or low temperature increases tack time.

Coverage Per Can

125-150 ft² (11.5-14 m²)

Match spray pattern by placing guide on floor.



CAUTION: CONTENTS UNDER PRESSURE. Do not puncture or incinerate container. Do not expose to heat or store at temperatures above 120° F. Avoid contact with eyes and prolonged contact with skin. Use with adequate ventilation. Do not take internally.

FIRST AID: In case of contact with eyes, flush thoroughly with water. If irritation persists, get medical attention. For skin contact, wash with soap and water. If ingested, do not induce vomiting. Contact physician. Keep Out Of Reach Of Children.

Manufactured by:
Interlock Industries
Manufactured for:
RHC
1602 North Union Street
Fostoria, Ohio 44830-1158
Phone: 1-866-353-9261

Chemtrec 24hr. Emergency Contact: (800) 424-9300
Customer Contract # 202471

SKU: 30-IG-RHC-2100
DATE: 9/18/12
REV: RELEASE